

# FIRE EXTINGUISHER PRESSURE GAUGES

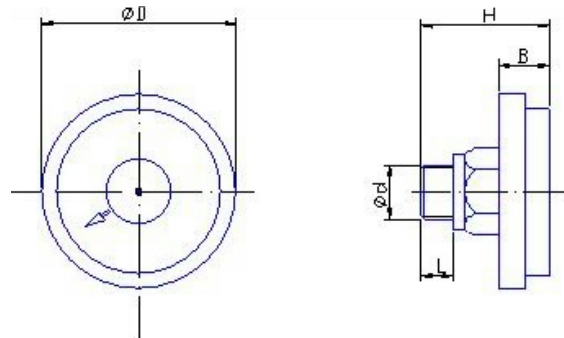
## 165 series

### APPLICATIONS

Particularly used to measure pressure which stays inside of the fire extinguisher container and oxygen or nitrogen steel container.

### DESCRIPTION

The gauges have stainless steel cases and high impact-resistant polycarbonate lens. Dial faces can be made per customer design. The spiral tube technology used in these gauges offers the necessary accuracy without the complication of gearing, linkages and bearings that are present in a conventional movement gauge. Every gauge must be tested by overpressure, water resistance, leak test and visual inspection.



### SPECIFICATIONS

<b>Diameter (Ø D)</b>	Ø30mm ; Ø36mm ; Ø40mm
<b>Case</b>	Stainless steel 304, IP 65
<b>Lens</b>	Polycarbonate
<b>Measuring principle</b>	Spiral tube, brass
<b>Connection</b>	Male thread 1/8" NPT standard, brass back connection only Other connections available by customization
<b>Accuracy</b>	±4% F.S.
<b>Temperature limits</b>	-20 to +60°C
<b>Ranges</b>	0 / 160 to 0 / 4000 psi

### HOW TO ORDER

