

## ACCESSORIES FOR PRESSURE GAUGES



### ◆ SYPHON (SIPHON)

Type: economic type or standard type  
Shape: U-form ; O-form (Trumpet forms)  
Material: steel plated with zinc  
                  stainless steel (seam or seamless)  
Connection: 1/4" ; 3/8" ; 1/2" PT / NPT / PF  
                  male or female thread



### ◆ COCK (BALL VALVE)

Material: brass with plating  
                  stainless steel 304 or 316  
Connection: 1/4" ; 3/8" ; 1/2" ; 3/4" ; 1"  
                  PT / NPT / PF, female thread



### ◆ NEEDLE VALVE

Material: stainless steel 316  
Connection: 1/4" ; 3/8" ; 1/2" ; 3/4" ; 1"  
                  PT / NPT / PF, female thread



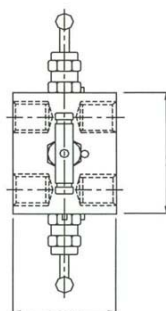
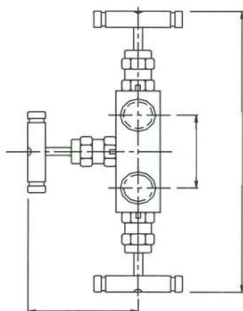
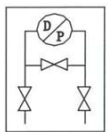
### ◆ PULSATION DAMPER (SNUBBER)

Material: stainless steel 316  
Connection: 1/4" ; 3/8" ; 1/2" ; 3/4" ; 1"  
                  PT / NPT / PF, female thread



### ◆ CAPILLARY

Material: capillary tube – brass or stainless steel  
                  Armor – stainless steel  
Connection: 1/4" ; 3/8" ; 1/2" ; 3/4" ; 1"  
                  PT / NPT / PF, female or male thread  
Length: 0.5 M ~ 15 M by order



### ◆ 3-WAY MANIFOLD (Pressure equalizing valve)

Material: stainless steel 304 or 316  
Connection: 1/2" PT / NPT / PF female thread