

DIAPHRAGM PRESSURE GAUGES

Sanitary Process Connection — Tri-Clamp Type

DS500 series

APPLICATIONS

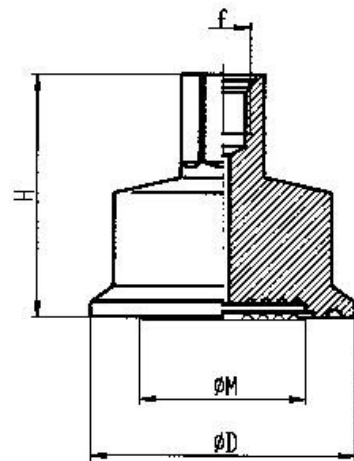
Diaphragm pressure gauges are used when medium is high viscous, crystallizing or with particles. DS500 series is particularly used in food, beverage, biochemical and pharmaceutical industry. The features are easy to open, cleaning without residues and quickly measuring point.



SPECIFICATIONS

Instruments	111 series pressure gauges and pressure transmitters are available
Process connection Tri-Clamp	Diaphragm housing material: SS304 ; SS316 ; SS316L Tri-clamp — 1" ; 1½" ; 2" ; 2½" Other clamp sizes available made-to-order
Diaphragm	SS316L standard, other material available made-to-order
Temperature	medium +80°C ; ambient 10 to 60°C for medium with temperature 80~400°C available made-to-order
Filling Fluid	Glycerin, food compatible
Pressure ranges	0 / 2.5 ~ 0 / 40 kg/cm ² (bar)
Accessory assembly (option)	Cooling fin Clamp ring (ferrule) + welding socket (whole set type) Capillary for remote measuring (specify length of capillary when ordering)

Clamp Specification	Size	M (diaphragm)	D (outer diameter)
IDF specification = Tri-clamp			
IDF	1-1/2"	36 mm	50.4 mm
	2"	48 mm	64 mm
U.S. specification			
US	1-1/2"	38 mm	64 mm
	2"	50.8 mm	77.5 mm
Other sizes and specification available by order			



HOW TO ORDER

(Please specify additionally the special custom-made specifications or option items)

