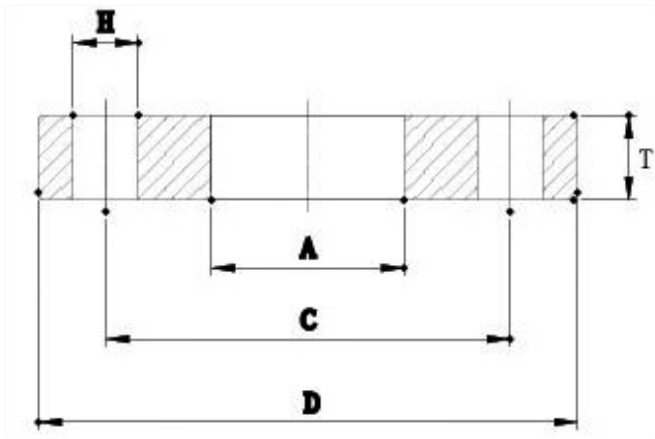
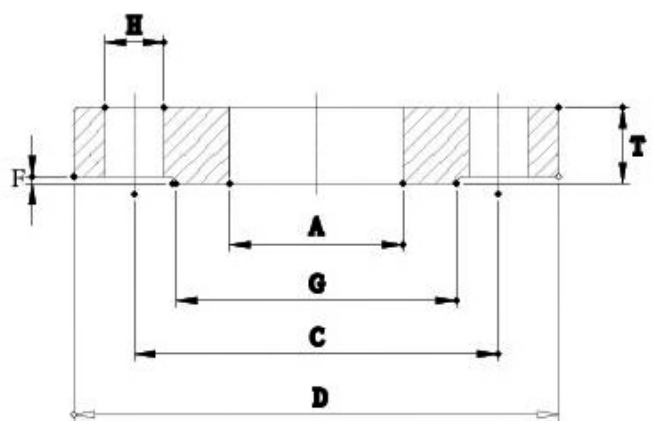


FLANGE SPECIFICATIONS

FF



RF



JIS 5 kg/cm² Flange

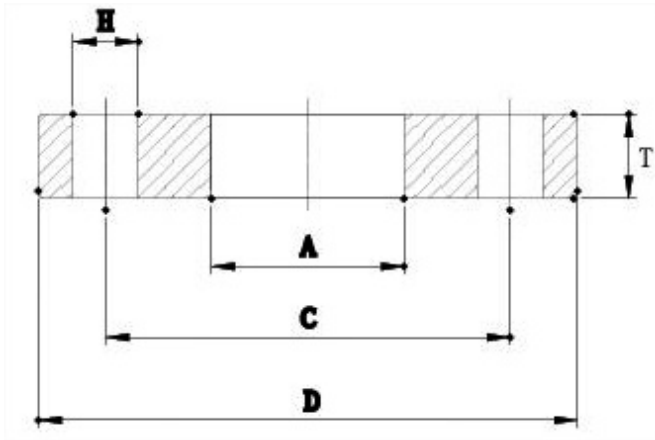
Normal Size		A	D	T	F	G	C	H	Bolt	
Inch	mm	mm	mm	mm	mm	mm	mm	mm	Number of holes	Dia. Bolt
3/8	10	18	75	9	1	42	55	12	4	3/8
1/2	15	22.5	80	9	1	48	60	12	4	3/8
3/4	20	28	85	10	1	52	65	12	4	3/8
1	25	34.5	95	10	1	62	75	12	4	3/8
1-1/4	32	43.5	115	12	2	72	90	15	4	1/2
1-1/2	40	50	120	12	2	78	95	15	4	1/2
2	50	61.5	130	14	2	88	105	15	4	1/2
2-1/2	65	77.5	155	14	2	112	130	15	4	1/2

JIS 10 kg/cm² Flange

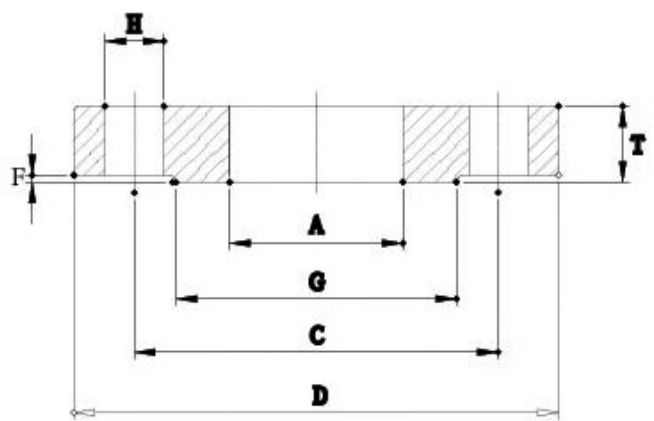
Normal Size		A	D	T	F	G	C	H	Bolt	
Inch	mm	mm	mm	mm	mm	mm	mm	mm	Number of holes	Dia. Bolt
3/8	10	18	90	12	1	48	65	15	4	1/2
1/2	15	22.5	95	12	1	52	70	15	4	1/2
3/4	20	28	100	14	1	58	75	15	4	1/2
1	25	34.5	125	14	1	70	90	19	4	5/8
1-1/4	32	43.5	135	16	2	80	100	19	4	5/8
1-1/2	40	50	140	16	2	85	105	19	4	5/8
2	50	61.5	155	16	2	100	120	19	4	5/8
2-1/2	65	77.5	175	18	2	120	140	19	4	5/8

FLANGE SPECIFICATIONS

FF



RF



JIS 16 kg/cm² Flange

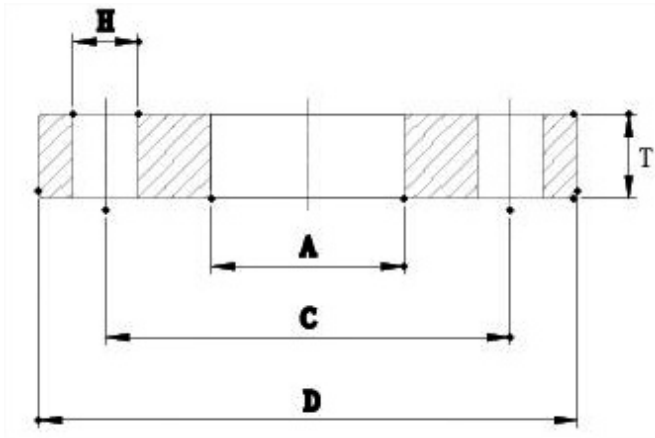
Normal Size		A	D	T	F	G	C	H	Bolt	
Inch	mm	mm	mm	mm	mm	mm	mm	mm	Number of holes	Dia. Bolt
3/8	10	18	90	12	1	48	65	15	4	1/2
1/2	15	22.5	95	12	1	52	70	15	4	1/2
3/4	20	28	100	14	1	58	75	15	4	1/2
1	25	34.5	125	14	1	70	90	19	4	5/8
1-1/4	32	43.5	135	16	2	80	100	19	4	5/8
1-1/2	40	50	140	16	2	85	105	19	4	5/8
2	50	61.5	155	16	2	100	120	19	8	5/8
2-1/2	65	77.5	175	18	2	120	140	19	8	5/8

JIS 20 kg/cm² Flange

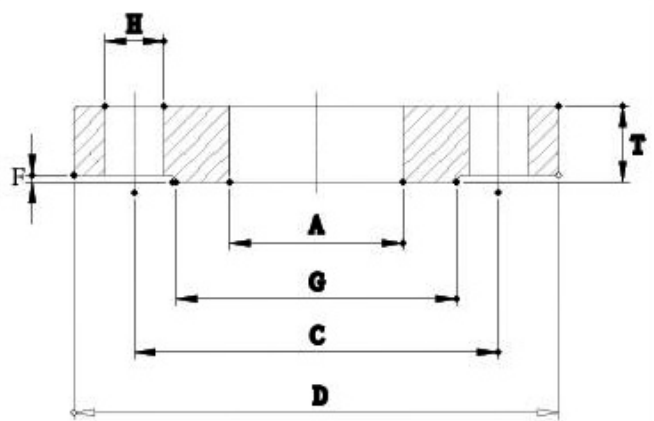
Normal Size		A	D	T	F	G	C	H	Bolt	
Inch	mm	mm	mm	mm	mm	mm	mm	mm	Number of holes	Dia. Bolt
3/8	10	18	90	14	1	48	65	15	4	1/2
1/2	15	22.5	95	14	1	52	70	15	4	1/2
3/4	20	28	100	16	1	58	75	15	4	1/2
1	25	34.5	125	16	1	70	90	19	4	5/8
1-1/4	32	43.5	135	18	2	80	100	19	4	5/8
1-1/2	40	50	140	18	2	85	105	19	4	5/8
2	50	61.5	155	18	2	100	120	19	8	5/8
2-1/2	65	77.5	175	20	2	120	140	19	8	5/8

FLANGE SPECIFICATIONS

FF



RF



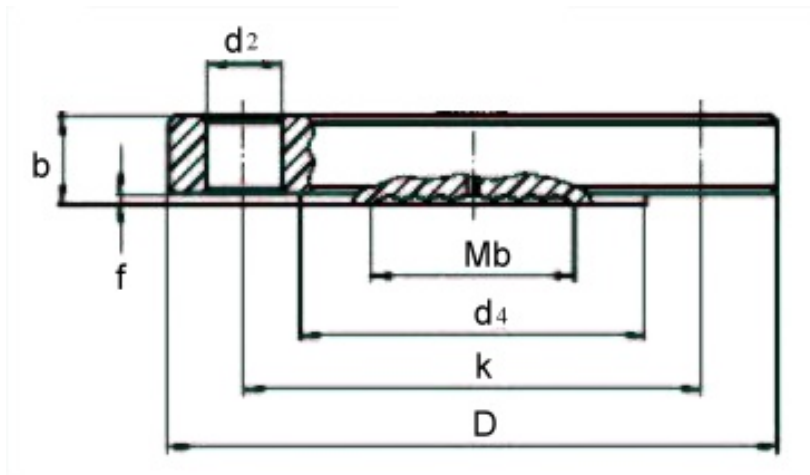
ANSI 150 LB Flange

Normal Size		A	D	T	F	G	C	H	Bolt	
Inch	mm	mm	mm	mm	mm	mm	mm	mm	Number of holes	Dia. Bolt
1/2	15	21	89	11.2	1.6	35	60	16	4	1/2
3/4	20	27	98	12.7	1.6	43	70	16	4	1/2
1	25	34	108	14.3	1.6	51	79	16	4	1/2
1-1/4	32	42	118	15.9	1.6	64	89	16	4	1/2
1-1/2	40	50	127	17.5	1.6	73	98	16	4	1/2
2	50	61.5	152	19.1	1.6	92	121	19	4	5/8
2-1/2	65	77.5	178	22.2	1.6	105	140	19	4	5/8

ANSI 300 LB Flange

Normal Size		A	D	T	F	G	C	H	Bolt	
Inch	mm	mm	mm	mm	mm	mm	mm	mm	Number of holes	Dia. Bolt
1/2	15	21	95	14.3	1.6	35	67	16	4	1/2
3/4	20	27	118	15.9	1.6	43	83	19	4	5/8
1	25	34	124	17.5	1.6	51	89	19	4	5/8
1-1/4	32	42	133	19.1	1.6	64	98	19	4	5/8
1-1/2	40	50	156	20.6	1.6	73	114	22	4	3/4
2	50	61.5	165	22.2	1.6	92	127	19	8	5/8
2-1/2	65	77.5	191	25.4	1.6	105	149	22	8	3/4

FLANGE SPECIFICATIONS



Flange EN 1092-1, form B1 / DIN 2501, form D

DN in mm	PN in bar	Mb	D	b	d2	k	f	d4	Number of bolts' holes
		mm	mm	mm	mm	mm	mm	mm	
25	10 / 40	32	115	22	14	85	2	68	4
	63 / 100	25	140	24	18	100	2	68	4
40	10 / 40	45	150	18	18	110	2	88	4
	63 / 100	45	170	26	22	125	2	88	4
	160	45	170	28	22	125	2	88	4
	250	45	185	34	26	135	2	88	4
50	10 / 40	59	165	20	18	125	2	102	4
	63	59	180	26	22	135	2	102	4
	100	59	195	28	26	145	2	102	4
	160	59	195	30	26	145	2	102	4
	250	59	200	38	26	150	2	102	8
80	10 / 16	89	200	20	18	160	2	138	8
	25 / 40	89	200	24	18	160	2	138	8
	63	89	215	28	22	170	2	138	8
	100	89	230	32	26	180	2	138	8
	160	89	230	36	26	180	2	138	8
	250	89	255	46	30	200	2	138	8
100	10 / 16	89	220	20	18	180	2	158	8
	25 / 40	89	235	24	22	190	2	162	8
	63	89	250	30	26	200	2	162	8
	100	89	265	36	30	210	2	162	8
	160	89	265	40	30	210	2	162	8
	250	89	300	54	33	235	2	162	8