

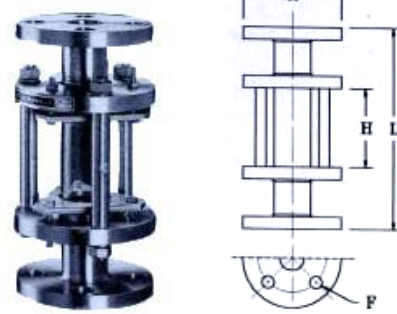
# FLOW SIGHTS SG SERIES

## SG300



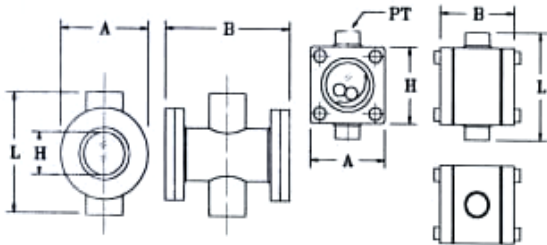
Max. Temp.	100°C
Max. Pressure	10 kg/cm <sup>2</sup>
Connection	Female PT thread

## SG100



Unit: mm

Size	10	15	20	25	32	40	50	65	80	100	125	150
L	210	210	240	240	240	260	260	260	300	300	310	310
H	100	100	100	100	120	120	120	120	150	150	150	150
AØ	90	95	100	125	135	140	155	175	185	210	250	280
F	3/8"	1/2"	3/4"	1"	1-1/4"	1-1/2"	2"	2-1/2"	3"	4"	5"	6"



Body	SS304	SS316	C.S.	PVC	PP
Max. Temp.	100°C			50°C	80°C
Max. Pressure	6 kg/cm <sup>2</sup>			4 kg/cm <sup>2</sup>	
Connection	JIS 10K RF Flange standard ANSI or DIN Flange available				

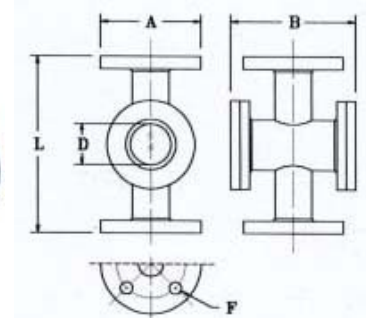
20~50A

10~15A

Unit: mm

Size	10	15	20	25	32	40	50
L	95	95	140	140	140	140	180
H	65	65	35	40	45	55	70
A	65	65	95	110	115	125	150
B	60	60	90	100	160	170	190
PT	3/8"	1/2"	3/4"	1"	1-1/4"	1-1/2"	2"

## SG200



Unit: mm

Size	10	15	20	25	32	40	50	65	80	100	125	150
L	160	160	180	180	180	180	220	270	270	320	380	420
D	35	35	35	40	45	55	70	85	95	130	155	200
AØ	90	95	100	125	135	140	155	175	185	210	250	280
B	90	90	90	100	160	170	190	210	230	250	280	320
F	3/8"	1/2"	3/4"	1"	1-1/4"	1-1/2"	2"	2-1/2"	3"	4"	5"	6"

Body	Seal
A SS304	T Teflon
B SS316	V Viton
C C.S.	A Asbestos
D PVC	N Neoprene
E PP	View
PVC & PP Body only available for SG100 & SG200	
	Glass

Body	SS304	SS316	C.S.	PVC	PP
Max. Temp.	200°C			50°C	80°C
Max. Pressure	6 kg/cm <sup>2</sup>			4 kg/cm <sup>2</sup>	
Connection	JIS 10K RF Flange standard ANSI or DIN Flange available				

### HOW TO ORDER

